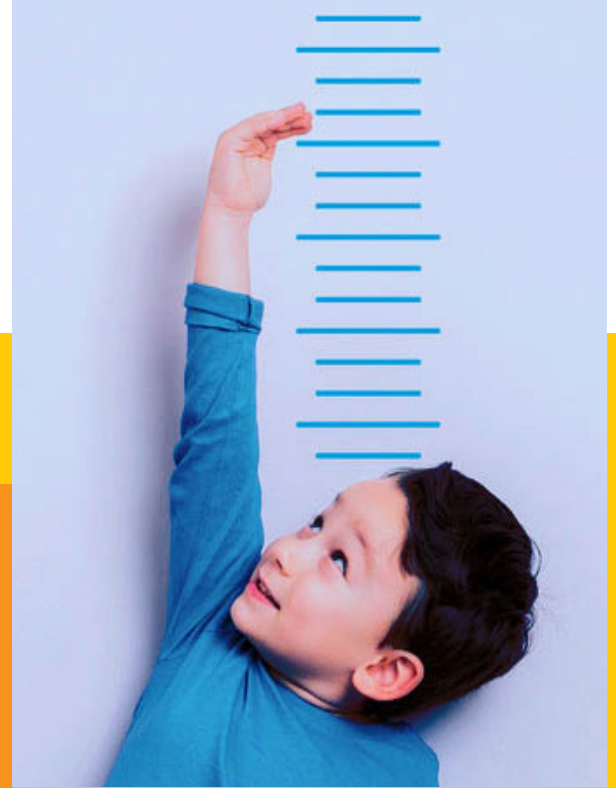


EARLY CHILDHOOD OC

Partnering for Thriving Communities



Our Shared Vision



Young children reach their developmental potential and are ready to succeed in school and in life



Adults are knowledgeable, nurturing, responsive and interact effectively with other adults, children and the family unit



Environments that impact children are safe, supportive, stable and healthy



Orange County attains economic and social benefits by prioritizing children and families

All children
are valued,
nurtured,
healthy,
and thriving.

Core Principles

- Children and families thrive regardless of income, language and culture
- Supports and services are coordinated and integrated across settings and sectors
- Policies and practices are family centered

Strategies for Action

- Promote and share knowledge
- Identify and eliminate barriers
- Build community capacity
- Make data-informed decisions
- Encourage public-private approaches
- Advance adequate and sustainable funding
- Implement quality standards
- Embed continuous quality improvement
- Ensure coordinated messaging

Orange County Early Childhood Policy Framework



Resilient Families



Quality Early Learning



Comprehensive Health & Development

ACCESS

Recognizes that availability of services are important

- Parenting programs are sufficiently available, promote the resilience of caregivers, and enhance knowledge of parenting and child development
- Programs, schools and communities offer opportunities for family engagement and leadership
- Family friendly policies and practices exist in the workplace

- High quality, developmentally appropriate learning experiences and environments are sufficiently available to meet the needs of all children and families
- Education, coaching and training are available for caregivers, teachers and other professionals

- Comprehensive health coverage and services are sufficiently available and utilized, including screening, early identification, consultation and treatment
- Mental health needs are identified and treated
- Workforce shortages of pediatric specialists are addressed

QUALITY

Recognizes that services must meet a standard of quality, not simply exist

- Programs promote and support family self-efficacy and self-sufficiency
- Families are empowered to choose high quality comprehensive services, supports and education
- Services and programs for families incorporate protective factors

- Formal and informal care environments and education practices reach the highest standards of quality
- Curriculum and behavior expectations for programs serving children birth through 2nd grade are developmentally appropriate
- All settings provide effective transitions across and within programs, schools and systems

- Providers and practices consistently meet quality indicators for their respective standards of care
- Settings and practices promote positive relationships, optimal child development, and appropriate nutrition and physical activity

EQUITY

Recognizes that special populations need special attention

- All families have help to access preventive, timely and coordinated services and supports according to their needs, including high-need children and families and special populations
- Education, employment, housing, financial, health and legal supports and policies contribute to family economic stability and long-term security

- Readiness and academic achievement gaps are eliminated for children birth through eight
- Early childhood professionals are well-trained and well-compensated across programs and settings

- Health disparities are eliminated through education, employment, housing, financial and legal policies that support child and family health
- All environments are safe, free of toxins, have affordable nutritious foods and other opportunities for physical activity
- Children with special health, behavioral or developmental needs receive individualized services and supports